



Grace Notes Red Dress

Designed for nine inch knit Grace Note doll

baw 6/16/2014

Materials:

- Sportweight yarn in Main Color and Contrast Color. Model made with Knit Picks Brava sport in red and white
- Size 3 dpn's

Gauge: 6 sts = 1 inch in stockinette

Dress skirt: begins at the hem. CO 64 sts in Main Color and divide evenly over four dpns, 16 sts per needle.

1: K64

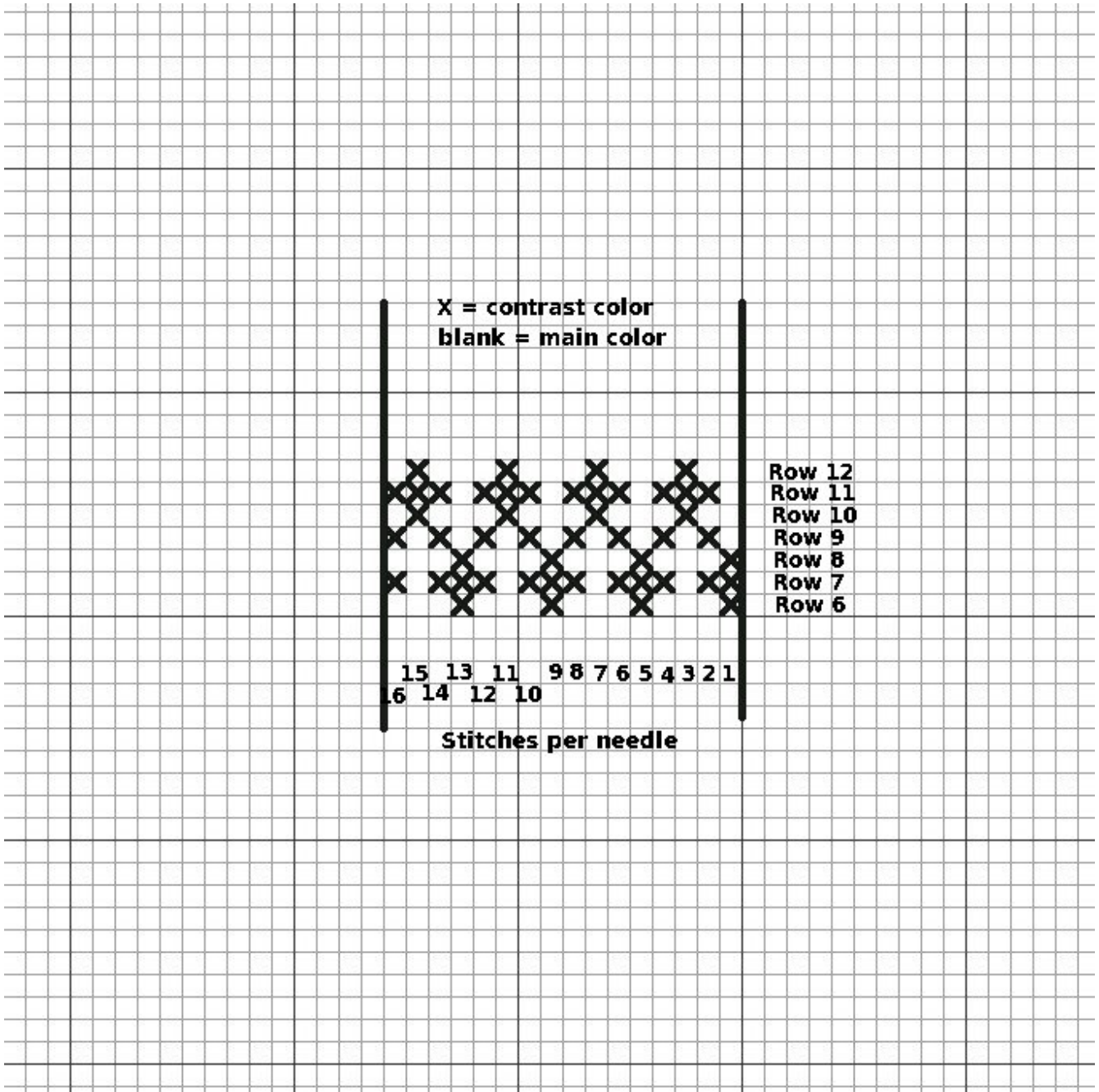
2: P 64

3: K64

4; P64

5: K64

6-12: work per the chart below in knit stitches only:



13-22: K64 in main color

23: K2tog across. 32 sts

Dress bodice:

24: Change to contrasting color and P32

25: Change to main color and K32

26-34: K32, 8 sts on each needle

35: Bind off four sts, K12; bind off four sts, K12. Place marker after last st to mark the true end of the row. CO eight sts on the fourth needle.

36: Needle 1: K4

Needle 2: K8, CO eight sts.

Needle 3: K4

Needle 4: K8, MM (move marker), K8 across the cast on stitches.

37: Needle 1: K4

Needle 2: K8, K8 across the cast on stitches.

Needle 3: K4

Needle 4: K6, Kdec, MM, (K2, Kdec) twice.

38: Needle 1: K4

Needle 2: K6, Kdec, (K2, Kdec) twice.

Needle 3: K4

Needle 4: K7, MM, (K1, Kdec, Kdec, K1).

39: Needle 1: K4

Needle 2: K7, (K1, Kdec, Kdec, K1)

Needle 3: K4

Needle 4: K7. Change to contrasting color and P4.

40 : Needle 1: P4

Needle 2: P11

Needle 3: P4

Needle 4: P7. Transfer these seven sts to needle 3, then bind off all sts knitwise. Weave in the loose ends.

Sleeves: With main color pick up 20 sts evenly around the armhole and distribute over four needles, five sts per needle.

1-8: K 5 on each needle.

9: K2, K2tog, K1 on each needle. 16 sts

10-12: K4 on each needle

13: Change to contrasting color and P16, bind off knitwise. Repeat for second sleeve.

Many sleeve treatments are possible. This is a long sleeve; three quarter and short sleeves can be done by working fewer rows. If you crochet, a really pretty sleeve is to work a double crochet ruffle around the cap of the sleeve, from side corner to side corner, leaving the four underarm stitches unworked.